



Bradford District Care
NHS Foundation Trust

Our Green Plan: Greener Together

BDCFT 2024-27 Green Plan



This document has been approved and ratified. Circumstances may arise where staff may become aware that changes in national policy or statutory or other guidance may affect the contents of this document. It is the duty of the staff member concerned to ensure that the document author is made aware of such changes so that the matter can be dealt with through the document review process.

NOTE: All approved and ratified documents remain extant until notification of an amended policy or procedure via Trust-wide notification, e.g. through the weekly e-Update publication or global e-mail and posting on the Intranet (Connect).

Procedural Document Title:	Our Green Plan: Greener Together 2024-2027
Version:	Final
Name and Title of Responsible Director/Senior Manager:	Deputy Director of Estates and Facilities
Name and Title of Author	Energy, Waste and Sustainability Manager
Title of Responsible Committee / Group (or Trust Board):	Finance and Performance Committee
Persons/Groups/Committees Consulted:	Green Strategy Group, Estates and Facilities Management Team; Finance, & Performance Committee; BDCFT Board.
Procedural Document Compliance Checklist adhered to:	Yes
Target Audience:	All BDCFT staff, service users and visitors
Approved by:	Finance and Performance Committee
Date Approved:	
Ratified by:	BDCFT Board
Date Ratified:	
Date Issued:	
Review Date:	
Frequency of Review:	Annual review of performance Three yearly review of Green Plan
Responsible for Dissemination:	Energy, Waste and Sustainability Team
Copies available from:	Connect on BDCFT Intranet
Where is previous copy archived?	P/ drive

Contents

Foreword.....	4
Introduction	5
Our vision	6
The BDCFT Carbon Reduction Plan.....	6
Our achievements since the last Green Plan.....	8
Area 1: Workforce and system leadership	10
Area 2: Net Zero Clinical transformation	11
Area 3: Digital transformation.....	13
Area 4: Travel and transport.....	14
Area 5: Estates and facilities.....	15
Area 6: Medicines.....	17
Area 7: Supply chain and procurement.....	18
Area 8: Food and nutrition	19
Area 9: Adaptation	20
Area 10: Green space and biodiversity	21
Summary of Headline Targets	22
Appendix A: Carbon Reduction Roadmap	23

Foreword

This is our second Green Plan, covering our activities between 2024-2027. It builds on the challenges and opportunities from our first Plan, but the overall aim and ambition remain the same: to be recognised as a leader in sustainability and environmental improvements within the NHS and our local community and to achieve carbon net zero in line with NHS targets. We have taken account of NHS England Green Plan guidance and our own carbon emission hot spots. We also learnt what is important to staff via our 'Green Champions' workshop and engagement stalls which has helped us to develop our priority areas.

We are making progress, but we know there is more to do, and fast. It is a challenging landscape for the NHS, with clinical, financial and workforce priorities competing for attention which can often seem at odds with our sustainability obligations. However, if we embed the Green Plan into our work, we believe we can achieve multiple benefits that help address service user needs and financial obligations as well as our environmental impact. I am particularly excited to see how including environmental considerations in quality improvement will help colleagues to create positive change.

The BDCFT Board are supportive of the net zero ambition, hence including 'best use of resources' in our Corporate Strategy. We know that business as usual will not achieve either our environmental, quality or financial goals and that a big shift is needed. We cannot ignore our environmental impact or the impact of the environment on our patients, supply chains and our ability to deliver services. We will continue to collaborate with others and hope to make a positive impact beyond our boundary by working with partners, particularly those in Bradford and Craven and the wider ICS. By doing so, we will influence staff, patients and the wider public to change their behaviour to achieve health and environmental benefits. One partnership that is flourishing is with Natural England, with whom we are working to achieve biodiversity gains and demonstrate the health benefits of nature.

Finally, we will continue to be transparent with our achievements, highlighting where we are doing well and where we are falling short. It is still a long road ahead to achieve net zero but with this Plan and our committed team, I'm confident we will make great strides.

Mike Woodhead

Chief Finance Officer and BDCFT Board Lead for Sustainability

Introduction



Bradford District Care NHS Foundation Trust (BDCFT) is a provider of award winning, high quality mental health, community, dental and learning disability services covering the urban and rural Bradford, Airedale, Wharfedale and Craven areas in West and North Yorkshire.

**3,000
STAFF**



Work across our Trust



Bradford District has a higher proportion of under 18-year-olds compared with the average for England

37%

of the population are ethnically diverse (compared with 19% for whole of England)



Bradford's deprivation ranking out of all 317 authorities in England

21st £

Refs:

Joint Strategic Needs Assessment: The Population of Bradford District: Demographics of Bradford District. Sept 2022.

Available at: <https://jsna.bradford.gov.uk/>

2021 Census figures available from: www.ethnicity-facts-figures.service.gov.uk

Our vision

Our ambition is:

To be recognised as a leader in sustainability and environmental improvements within the NHS and our local community

To achieve this, we need the support of the whole Trust, service users and visitors and for change to occur at pace and scale. We will achieve this by implementing our objectives, which are to:

1. Embed a Trust-wide approach to sustainability.
2. Consider the environmental impacts of everything we do.
3. Reduce carbon emissions.
4. Reduce consumption and waste.
5. Make a positive impact on our people and communities.

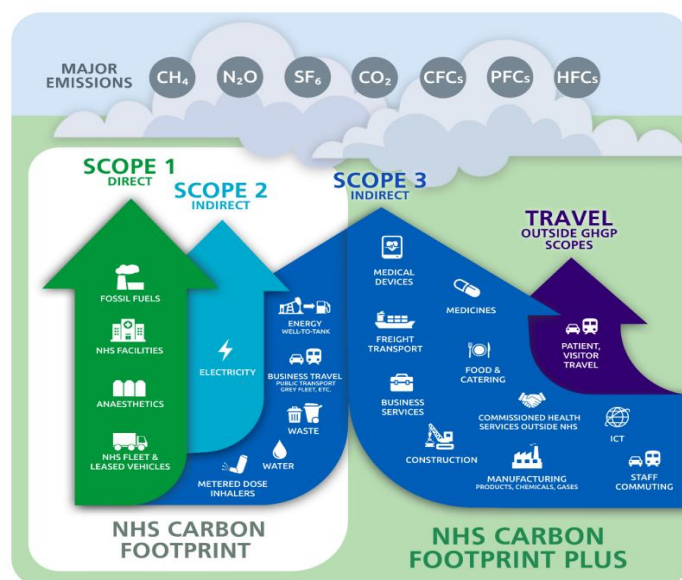
These large umbrella objectives will be met through achievement of key actions as detailed in each topic area and summarised on page 21.

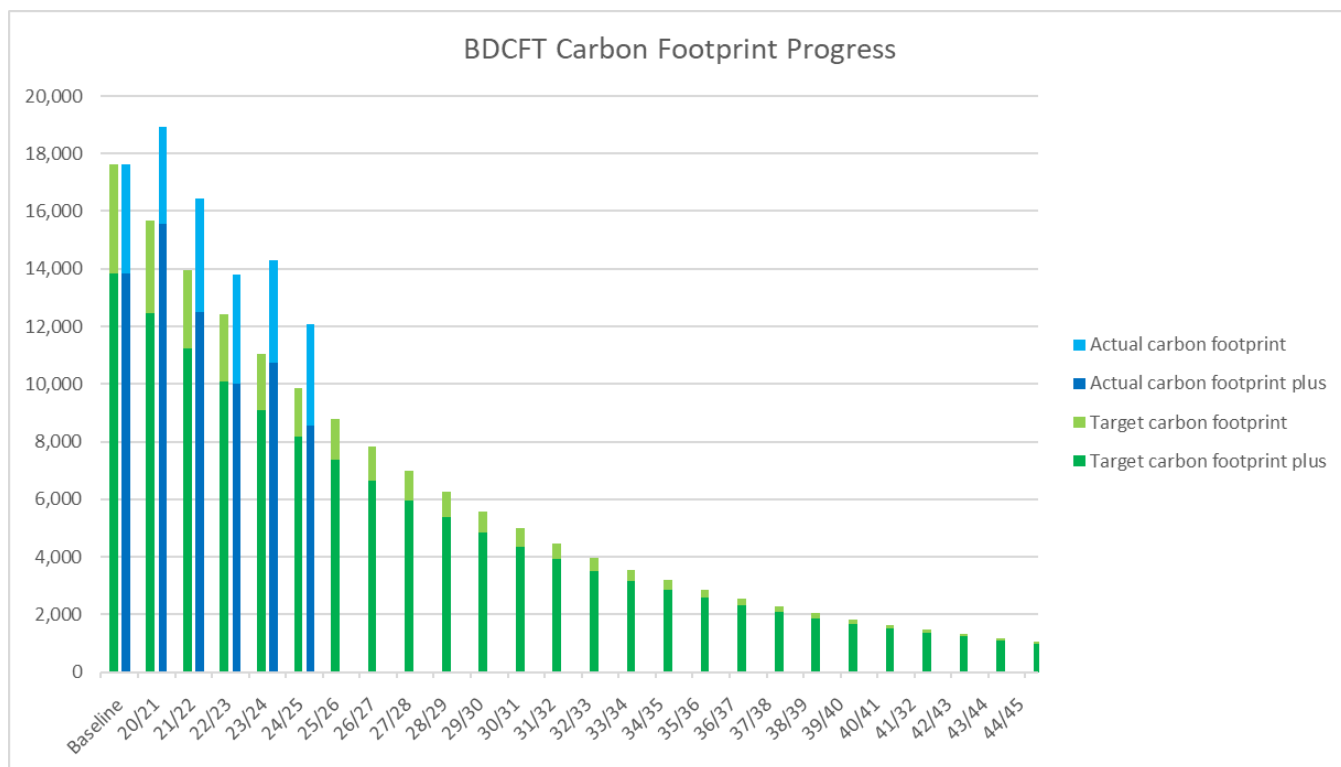
The BDCFT Carbon Reduction Plan

Everything we do and that we buy, generates carbon. We have calculated our carbon emissions for electricity, gas and business travel annually for many years and we have included our Scope 3 (predominantly procurement emissions) since 2019-20.

The Delivering a net zero NHS report divides emissions into those we have control over (the NHS Carbon Footprint) and indirect emissions (NHS Carbon Footprint Plus).

Our carbon footprint emissions in 2024-25 were 3,529 t/CO₂e which is lower than the baseline and the previous year but is still stubbornly high and significantly above our target. However, future step changes are expected as electricity and gas consumption decrease, heating is decarbonised and fleet vehicles transition to electric. The graph below shows performance against target and whilst reduction in spend has helped to reduce our carbon footprint plus, investment will be needed to support carbon footprint reduction.





	Emissions source	2019/20 T/CO ₂ e emissions: benchmark	2020/21	2021/22	2022/23	2023/24	2024/25
NHS Carbon Footprint	Fossil Fuels	1,981	1,723	2,180	2,166	1,969	2,102
	NHS Fleet and Leased Vehicles	146	72	180	69	222	158
	Electricity (inc WTT)	1,011	1,193	862	876	839	817
	Water and Waste	72	43	115	24	25	22
	Business travel (grey Fleet)	571	319	597	678	510	430
	TOTAL carbon footprint	3,780	3,349	3,935	3,813	3,565	3,529
Carbon Footprint Plus	Medical equipment	1,607	1,701	1,539	1,713	1,270	889
	Medicines	494	613	658	411	848	669
	Non-medical equipment	1,814	2,978	1,736	1,089	1,201	1,117
	Other supply chain	3,795	4,627	3,818	2,220	1,792	1,302
	Staff commuting	1,602	1,077	495	1,156	1,156	1,003
	Commissioned healthcare	4,540	4,567	4,259	3,404	4,473	3,562
	TOTAL carbon footprint plus	13,852	15,563	12,504	9,993	10,740	8,542
All annual emissions		17,633	18,912	16,439	13,806	14,305	12,071
Reduction from baseline			-7%	7%	22%	19%	32%

To achieve ‘net zero’, we need to aim for a minimum of 15% year on year carbon reduction for our NHS Carbon Footprint, and 10% Carbon Footprint Plus.

A headline carbon reduction roadmap is included in Appendix A. We have identified opportunities to reduce our emissions, centred on heat decarbonisation, energy efficiency and mileage reduction. There are also opportunities with medication, consumables or other purchases and the Smarter Spaces project. If for technical or financial reasons we are unable to complete projects, our ability to meet our carbon reduction obligations will be compromised.

We will continue to measure our carbon impact year on year and report to Board and colleagues. We will also continue to work with neighbouring Trusts within Bradford and Craven Partnership as well as the wider ICS on district and regional initiatives.

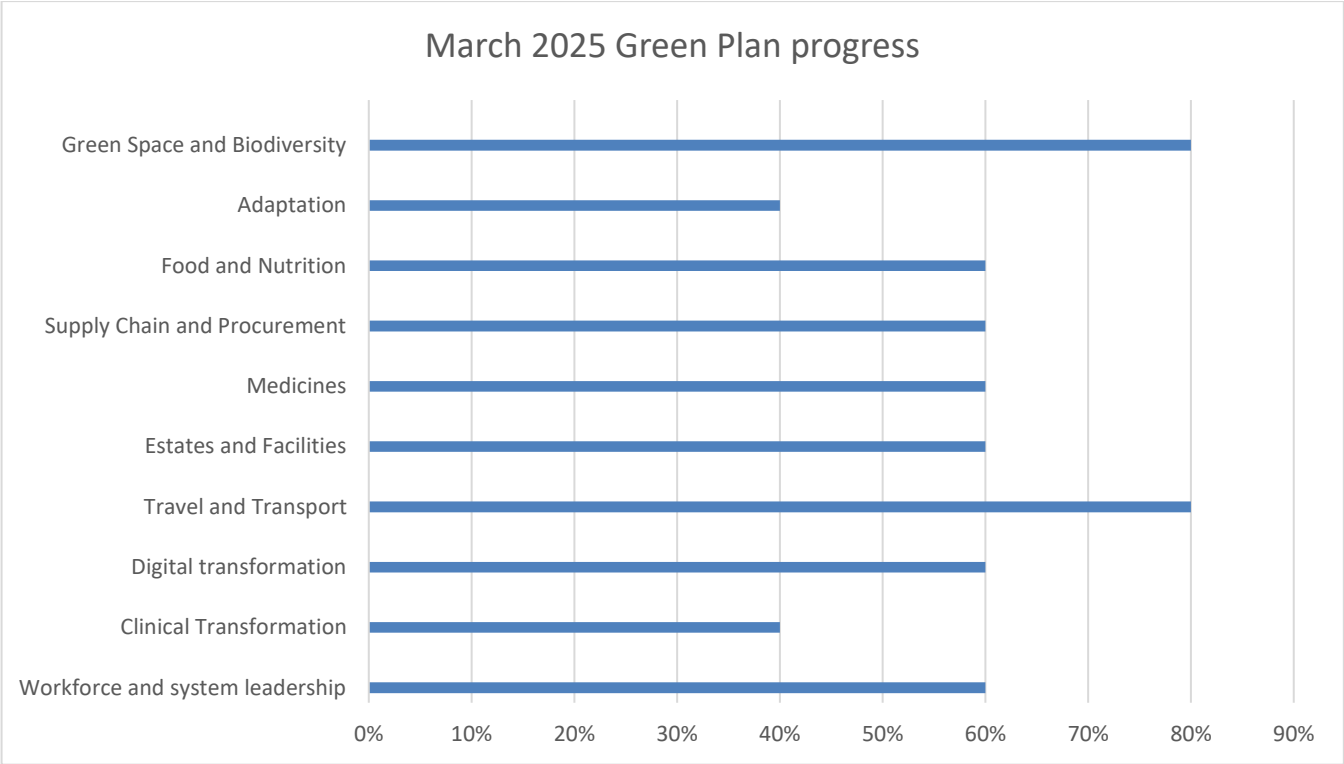
Our achievements since the last Green Plan

In 2024-25 the Energy, Waste and Sustainability team won 'Team of the Year' at the Trust You're A Star Awards. This was in recognition of the work the team is doing to help reduce the environmental impact of the Trust.

BDCFT has achieved carbon reductions through reduction in fleet fuel consumption and business travel. However, utility consumption and therefore emissions from gas and electricity remain high. BDCFT was successful in 2024-25 in receiving external funding from the NHS National Energy Efficiency Fund. This included over £55,000 to improve the building management system at New Mill and over £700,000 to install LED lighting throughout the whole of Airedale Centre for Mental Health. Both will help to reduce electricity bills in 2025-26 and beyond. The Trust also secured a £48,000 award of Crown Commercial Services NHSE Energy Funding to install sub-meters at Lynfield Mount Hospital because heat decarbonisation remains a priority for the Trust.

In addition to the carbon savings, we trained 37 BDCFT staff and a further 17 colleagues from the wider ICS in Carbon Literacy, taking the total trained to 282. We have reduced both general waste and clinical waste arisings by 13% and 12% from the previous year, and increased our recycling rate. We have increased our electric vehicle fleet and charging infrastructure with 28 new points at Lynfield Mount Hospital.

Previously, the Trust has completed the Greener NHS Green Plan self-assessment, which has identified areas to focus on. This is no longer available and therefore the Trust will instead report progress year on year against our own benchmark.



Future focus will be on clinical transformation, and adaptation although all areas continue to be of importance. The following sections detail our plans in each area with each section taking account of updated Green Plan guidance from NHS England, published February 2025, the NHS Standard Contract 2025/26.

Area 1: Workforce and system leadership

Responsible Person/Team:

Energy, Waste and Sustainability Manager and the Green Strategy Group.

Current Performance within Green Plan self-assessment:

Above national average

Why it matters

Engaging our 3,000 plus workforce in climate action is essential if we are to meet our Green Plan targets. We want to educate, motivate, and inspire our staff to act both in work and at home. By providing practical information on reducing their carbon footprint, for example through active travel and healthy eating, we can also help our staff to be physically and mentally healthier. This has the potential to support wider Trust objectives regarding workforce.

What we'll continue to do

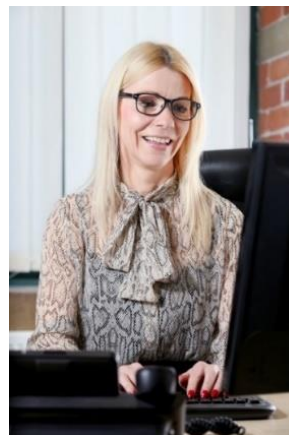
- Develop and support our Green Champions and Leaders network and promote sustainability at new starter inductions.
- Convene a Green Strategy Group to meet quarterly. The group includes Exec Board members, senior leaders and a service user representative.
- Circulate a monthly sustainability newsletter for staff and active twitter/ X account.
- Report progress regularly to the Finance and Performance Committee and to the Board.
- Include a detailed sustainability update in the BDCFT annual report.
- Offer free, certified Carbon Literacy training to all staff.
- Promote the team/ department sustainability self-assessments.

What we plan to do

- Sustainability Impact Assessment training to be offered by the end of 2024.
- 10% of staff to be carbon literacy trained and become Green Champions by the end of 2025.
- Sustainability team will speak at the team meetings of five different teams per year.

2025 Green Plan Targets Update

- In line with 2025 NHSE updated Green Plan guidance, we plan to assess our workforce capacity and skill requirements for delivering the green plan.



Area 2: Net Zero Clinical transformation

Responsible Person/Team:

KPO Lead and Deputy Directors of Operations.

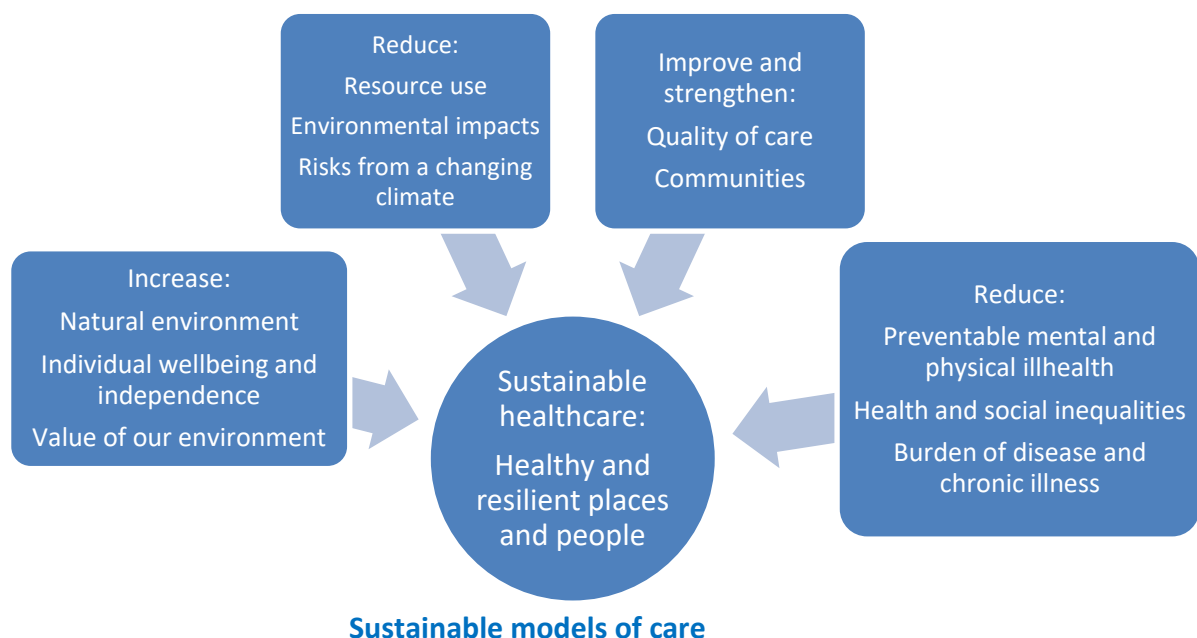
Current Performance within Green Plan self-assessment:

Below national average

Why it matters

Sustainable models of care include aspects of all other areas of the Green Plan and should be a key component of clinical transformation. It is important for sustainability to be embedded in decision making by senior leaders and at all levels of management. Consideration of sustainability in transformation programmes and in quality improvement will be key.

We can take a proactive approach to primary and secondary prevention of physical and mental health issues, to keep our population healthy and at home. Any actions we can take to reduce the clinical input required by our service users will help to reduce our carbon emissions, for example by preventing admissions. This could include acting on the recommendations within the RCPsych report¹ such as 'Keeping people healthy' or 'right care, right place, right time' principles. This could include non-medicalised interventions alongside medication and talking therapies such as the promotion of nature-based activities (which also link to the biodiversity actions in this Plan). Shifting to remote consultations in place of face-to-face appointments, where this is appropriate for our service users, or treatment closer to where they live in the community, will reduce the carbon footprint of transport by our staff and service users. It also links to objectives within the NHS long-term plan.



¹ [RCPsych, 2023, Delivering greener, more sustainable and net zero mental health care](#)

What we'll continue to do

- Work with our Occupational Therapy teams to promote nature-based activities and social prescribing to both inpatients and outpatients.
- Involve staff, service users and the wider community in decisions that affect when and where they are treated and will build on this.

What we plan to do

- Embed the principles of Sustainability in Quality Improvement within the Trust's Quality Improvement processes through participation in the SusQI² Academy by the end of 2024.
- Include sustainability metrics in all transformation programmes from 2024-25 and identify sustainability opportunities within operational leadership meetings from 2024-25 with business partners.

2025 Green Plan Targets Update

In line with 2025 NHSE updated Green Plan guidance, we will:

- Identify a clinical lead with oversight of net zero clinical transformation, with formal links into board-level leadership and governance.
- Focus on reducing emissions and improving quality of care for at least one clinical area, for example, Adult Physical Health.

² [Sustainability in Quality Improvement \(SusQI\) | Centre for Sustainable Healthcare](#)

Area 3: Digital transformation

Responsible Person/Team:

Head of Digital Services, Admin Service Manager.

Current Performance within Green Plan self-assessment:

Above national average

Why it matters

Digital transformation will help BDCT to reduce carbon emissions further by reducing the need for staff and service user travel through homeworking and virtual appointments and enabling more efficient use of resources such as reducing paper use and postage. Whilst pursuing these changes we will be mindful not to reduce quality of care for our service users or exacerbate the digital divide and health inequalities. Linking with the Digital Clinical Leads will be important.

There are many priorities within the Digital Strategy that align with sustainability improvements. The Sustainability and Digital Services teams will therefore work closely to measure the benefits of digital improvements.

What we'll continue to do

- Reduce printer use across the Trust.
- Trial remote consultation software.
- Reduce the number of mobile phones that the Trust purchases.
- Reuse IT equipment where possible.
- Continue to offer hybrid and home working.

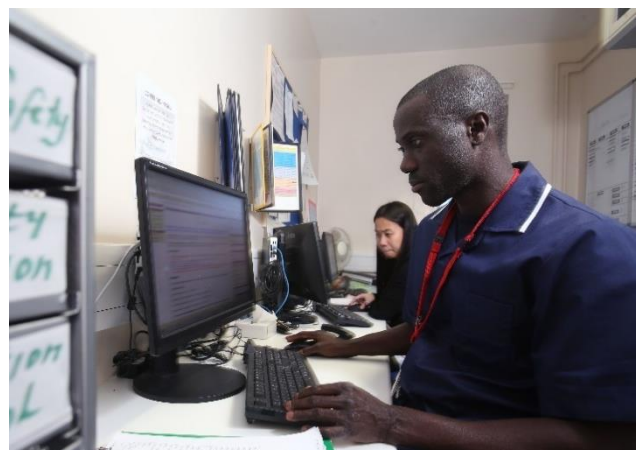
What we plan to do

- Assess opportunities to increase digital communications with service users during 2024 and develop a plan to reduce printing and postage to a minimum by 2027.
- Minimum 25% outpatient appointments delivered remotely in 2024-25 and plans in place for at least 50% of outpatient activity to be delivered remotely by 2027 (as per the ICS Green Plan and NHS long-term plan).
- Promote digitally enabled care as per the BDCFT Digital Strategy.

2025 NHSE Green Plan Guidance Update

In line with 2025 NHSE updated Green Plan guidance, we will:

- Investigate using circular and low-carbon approaches to IT hardware management.
- Consider low carbon hosting and promoting good data hygiene.



Area 4: Travel and transport

Responsible Person/Team:

Energy, Waste and Sustainability Manager.

Current Performance within Green Plan self-assessment:

Below national average

Why it matters

As a community Trust, our employees drive around 2 million business miles each year and this makes up 5% of our total emissions (18% of our carbon footprint), plus we generate fleet and commuting emissions, making travel an important area for action. Road travel also contributes to poor air quality. Exposure to air pollution increases risk of premature deaths from heart and lung disease and exacerbates respiratory symptoms such as asthma and chronic obstructive pulmonary disease (COPD). It is also linked to dementia and premature birth. Individuals of all ages can be impacted by air pollution that causes a decline in quality of life and an increase in health care costs.

Bradford's air quality is improving; however there are still areas which regularly exceed limits for nitrogen dioxide (NO₂). The city has had a Clean Air Zone in place since September 2022 to reduce this³. BDCFT can use a range of measures to encourage modal shift by supporting our staff and service users to reduce car usage and change to active travel (e.g., walking and cycling) or public transport.

What we'll continue to do

- Deliver our BDCFT Green Travel Plan 2021-26.
- Complete the Clean Air Hospital Framework each year and deliver annual improvements.
- Work with community teams to identify where mileage reduction can be achieved.

What we plan to do

- Develop an electric vehicle strategy by June 2024 and begin to deliver actions.
- 5% reduction in business miles each year of this plan.
- Create a behaviour change campaign in 2024 to encourage modal shift during the duration of the Plan.
- Improve walking and cycling infrastructure at our inpatient sites⁴.
- All new vehicles owned and leased by the Trust will be zero emission vehicles by 2027.



2025 Green Plan Targets Update

- BDCFT already plans to meet requirements set out in the NHSE updated Green Plan guidance.
- In line with the NHS Standard Contract 2025/26 we will promote more sustainable travel options to service users and visitors.

³ City of Bradford Metropolitan District Council, 2021/2022 Air Quality Annual Status Report (June 2022): [2021-2022 Air Quality Annual Status \(bradford.gov.uk\)](https://www.bradford.gov.uk/2021-2022-Air-Quality-Annual-Status-Report)

⁴ Plans at Airedale Centre for Mental Health will be agreed with Airedale General Hospital and may be affected by their new hospital plans.

Area 5: Estates and facilities

Responsible Person/Team:

Energy, Waste and Sustainability Manager, Estates Maintenance Manager, Head of Capital and Development.

Current Performance within Green Plan self-assessment:

Similar to national average

Why it matters

The electricity, gas and water used by BDCFT, and the waste produced are a substantial financial cost to the Trust. Gas accounts for 17% of the Trust's total carbon footprint, and electricity accounts for 5%. By acting on our heat decarbonisation plan, planning the lifecycle replacement of boilers with low carbon heating, improving energy efficiency of our larger buildings, we will reduce our emissions and provide financial savings to the Trust. Investment in onsite energy generation also supports energy resilience. We will improve the energy performance of our buildings through refurbishment, and ensuring any new building meets the NHS Net Zero Building Standard⁵.

What we'll continue to do

- Monitor monthly utility consumption.
- Support home working where appropriate, assess space utilisation and make best use of our estate through the Smarter Spaces programme.
- Monitor and respond quickly to fluctuations in temperature and implement the temperature control policy.
- We will follow our Heat Decarbonisation Plan.
- We will continue to promote our Waste Management Policy to staff including the waste hierarchy.
- We will continue to avoid sending any waste to landfill.



What we plan to do

- Deliver one larger energy efficiency scheme per year⁶.
- Create an energy efficiency behaviour change campaign in 2024 to increase staff engagement and awareness.
- Improve segregation and reduce overall waste by 5% per annum.
- Review the heat decarbonisation plan alongside the estates 6-facet survey and plant lifecycle.
- Review options to install electricity, heat and water meters at building or department level by 2027.

Funding large scale capital projects such as solar power or boiler replacements can be a challenge. We will ensure we are able to take advantage of funding opportunities that arise in year.

⁵ [NHS England » NHS Net Zero Building Standard](#)

⁶ Capital funding being available.

2025 Green Plan Targets Update

- BDCFT already plans to meet requirements set out in the NHSE updated Green Plan guidance.
- In line with the NHS Standard Contract 2025/26 we will be following NHSE recommendations on energy purchasing by joining the CCS energy basket from April 2027.
- In line with targets within the NHS Estates Net Zero Carbon Delivery Plan we will:
 - Review options to install energy metering at floor level (both electricity and heat) and establish a programme to install metering where feasible.
 - Review options to install leak detection systems (gas, water)

Area 6: Medicines

Responsible Person/Team:

Head of Pharmacy, Community Dental Service Clinical Lead.

Current Performance within Green Plan self-assessment:

Above national average

Why it matters

The manufacturing and transport of medicines is a carbon-intensive activity. Reduction of medication use, embracing alternatives such as social or green prescribing, will help to reduce this section of the Trust's carbon footprint. As a community Trust, we do not use anaesthetic gases and prescribe very few inhalers which are currently the main targets for reducing the carbon footprint of medicines within the NHS.

What we'll continue to do

- Investigate deprescribing, over-prescribing and poly-pharmacy.
- Participate in regional Sustainable Pharmacy meetings and delivery of the ICS medicines Green Plan.
- Reduce paper and plastic use related to prescribing where possible.
- Review medicines stock control to minimise wastage.

What we plan to do

- Consider opportunities to reduce the climate change impact of our nitrous oxide use in community dental during 2024-25.
- We will sign up to the Royal Pharmaceutical Society Greener Pharmacy Toolkit and work through the recommended actions.

2025 Green Plan Targets Update

A previous target was to utilise the Medicines Carbon Footprint⁷ tool to assess the carbon impact of medicines we prescribe and identify low-carbon alternatives where possible. We have reviewed this tool for the ten most prescribed medications in BDCFT, however it is not applicable as many of our medications are prescribed in liquid form, and the tool focusses on tablet medication. We have replaced this with the RPS Toolkit action above.

⁷ Created by YewMaker and due for release in 2024: www.yewmaker.com/smp

Area 7: Supply chain and procurement

Responsible Person/Team:

Head of Procurement and Sustainable Procurement Manager (AGH Solutions) and Energy, Waste and Sustainability Manager.

Current Performance within Green Plan self-assessment:

Similar to national average

Why it matters

The items we purchased in 2022/23 accounted for 40% of all carbon emissions for BDCT. We can use our purchasing power to put pressure on our suppliers to reduce their negative environmental impact. By implementing Government sustainable procurement policy, and promoting a circular economy,⁸ we can reduce items purchased and disposed, thus saving both money and carbon. We can reduce reliance on single use items, reuse furniture and clothing and reduce the carbon intensity of products purchased.

What we'll continue to do

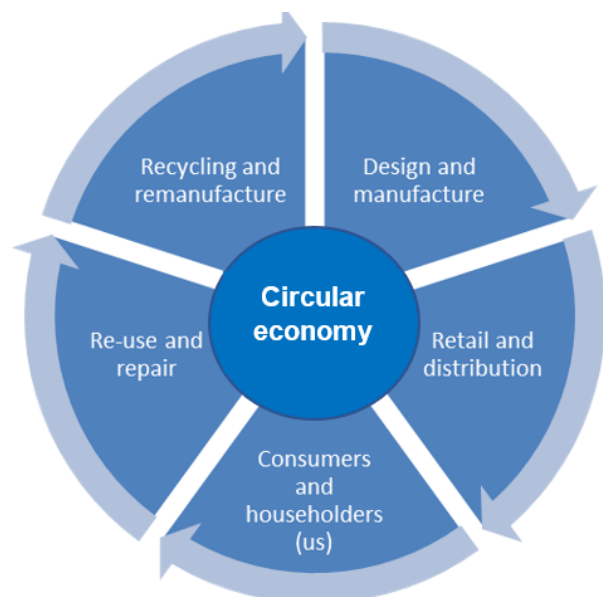
- Embed knowledge and understanding of the Sustainable Procurement and Innovation Policy.
- Continue to collaborate with the West Yorkshire ICS on Sustainability and Innovation.
- Include social value in procurement and implement the NHS Net Zero Supplier Roadmap and where applicable full Carbon Reduction Plans for Suppliers.
- Promote reuse to ensure staff consider this as a first option where feasible.
- Encourage use of the sustainability Product Evaluation tool.

What we plan to do

- Identify (minimum of) one single use product per annum that could be eliminated, reduced or replaced.
- Promote carbon reduction/ net zero plan requirements to suppliers.
- Promote electric vehicle deliveries.

2025 Green Plan Targets Update

BDCFT already plans to meet requirements set out in the NHSE updated Green Plan guidance.



⁸ The Ellen MacArthur Foundation definition of a circular economy is one that is based on the principles of designing out waste and pollution, keeping products and materials in use, and regenerating natural systems.

Area 8: Food and nutrition

Responsible Person/Team:

Facilities Manager: Food Services Manager, Lead Allied Health Professional.

Current Performance within Green Plan self-assessment:

Below national average

Why it matters

The food and drink we serve must be produced, sourced, consumed and disposed of appropriately to protect the environment, provide benefit to society, have high standards of animal welfare and contribute to sustainable healthcare.

Well-balanced nutrition will not only optimise health for staff and service users but will also minimise greenhouse gas emissions. Sustainability is now included in the updated Hospital Food and Drink Strategy. The BDCFT catering team are early adopters of Guardians of Grub to assess food waste in inpatient settings, and are open to opportunities to reduce food waste and carbon across their activities. Food security, because of extreme weather events caused by climate change, also needs to be taken into account.

What we'll continue to do

- Monitor food waste in wards and kitchens, identifying opportunities to reduce waste.
- Send food waste for anaerobic digestion or in vessel composting.
- Identify additional opportunities to reduce the reliance on catering disposables.
- Work with Bradford Council and partners on the Bradford Sustainable Food Partnership.

What we plan to do

- Promote sustainable diets as detailed in the Hospital Food and Drink Strategy.
- Assess the carbon impact of a minimum of three meals per annum and identify low carbon options to staff and service users.
- Introduce an electronic patient meal ordering system.
- Provide opportunities to co-create menus with patients and staff through quarterly engagement sessions which promote diets in line with the eatwell guide and encourage plant-based eating.

2025 Green Plan Targets Update

BDCFT already plans to meet requirements set out in the NHSE updated Green Plan guidance.



Area 9: Adaptation

Responsible Person/Team:

Energy, Waste and Sustainability Manager, Estates Maintenance Manager, Head of Capital and Development.

Current Performance within Green Plan self-assessment:

Similar to national average

Why it matters

Although the focus of our Green Plan is climate change mitigation, some aspects of climate change are happening already, such as weather events resulting in flood risks and heat waves. Such events threaten our ability to deliver high quality care. We need to ensure our buildings and services have the resilience to deal with these changes; for example that our district nurses can continue to visit service users during severe winters, and our inpatients and vulnerable community service users do not overheat during more intense summers.

What we'll continue to do

- Our Emergency Preparedness team has already considered national heat wave, cold weather and flood plans and these feed into the climate change adaptation plan.
- Monitor over-heating events, especially in clinical and ward areas.
- Communicate with staff how best to deal with different extreme weather scenarios; for example, that they know how to keep clinical and ward areas cool in the event of hot weather, and how to report high indoor temperatures.
- Implement our Adaptation Plan.

What we plan to do

- Participate in regular meetings with Bradford Council and acute Trust neighbours to address Adaptation needs at place level.
- Complete a Climate Change Risk Assessment by 2025 to highlight risks to continuity and resilience, which will be reviewed annually or after an event or near miss and include significant risks on our risk register. We will consider clinical needs, the quality of our estate and supporting infrastructure.

2025 Green Plan Update

BDCFT already plans to meet requirements set out in the NHSE updated Green Plan guidance.



Area 10: Green space and biodiversity

Responsible Person/Team:

Energy, Waste and Sustainability Manager, Estates Maintenance Manager.

Current Performance within Green Plan self-assessment:

Not measured

Why it matters

The evidence of physical and mental health benefits of access to green space is clear and therefore as a mental health Trust, it is important for us to recognise and encourage use of green space to improve mental and physical health. We can help to alleviate stress, anxiety and depression by encouraging nature-based therapies and we can mitigate the impact of weight gain as a result of medication by encouraging physical activity outdoors.

Improving our green spaces can also contribute to improved air quality and noise reduction. Green spaces support biodiversity whilst alleviating the impacts of climate change, for example providing shading or slowing rainwater flow to prevent flash flooding.

We are already supporters of the NHS Forest, having planted trees at several of our sites and are developing a partnership with Natural England to enhance our sites. We will continue to review our Biodiversity Duty and our part within the regional Local Nature Recovery Strategy. We will aim to achieve 30 x 30 i.e 30% of our land to be protected for nature by 2030.

What we'll continue to do

- Implement the actions in our Biodiversity and Green Space Plan.
- Develop our partnerships with Natural England and the National Trust (East Riddlesden Hall).
- Promote use of the BDCFT allotment in Keighley and other opportunities for service users to benefit from nature-based activities and therapy.

What we plan to do

- Achieve minimum 10% biodiversity gain on Lynfield Mount Hospital when redevelopment plans are submitted to Bradford Council.
- Provide opportunities for service users to benefit from nature-based activities and therapy. We will monitor participation and outcome measures.

2025 Green Plan Update

BDCFT already plans to meet requirements set out in the NHSE updated Green Plan guidance.



Summary of Headline Targets

The two priority actions per topic area are summarised below. Progress towards targets will be RAG rated annually to show where we are doing well and where more time and resource is needed.

Workforce and system leadership	<ul style="list-style-type: none"> •Sustainability Impact Assessment training offered by the end of 2024. •10% of staff to be carbon literacy trained and become Green Champions by the end of 2025.
Sustainable models of care	<ul style="list-style-type: none"> •Join the SusQI Academy and implement sustainable quality improvement by the end of 2024. •Include sustainability metrics in all transformation programmes and operational leadership meetings.
Digital Transformation	<ul style="list-style-type: none"> •Assess opportunities to increase digital communications with service users during 2024. •25% outpatient appointments delivered remotely in 2024-25 increasing to 50% by 2027.
Travel and transport	<ul style="list-style-type: none"> •5% reduction in business miles each year of this plan. •Create a behaviour change campaign in 2024 to encourage modal shift during the duration of the Plan.
Estates and facilities	<ul style="list-style-type: none"> •Deliver one large energy efficiency scheme per year. •Review the heat decarbonisation plan alongside the estates 6-facet survey and plant lifecycle.
Medicines	<ul style="list-style-type: none"> •Complete the Royal Pharmaceutical Society Greener Pharmacy Toolkit. •Review the climate change impact of nitrous oxide used in community dental.
Supply Chain and Procurement	<ul style="list-style-type: none"> •Identify one single use product per annum that could be eliminated, reduced or replaced. •Promote carbon reduction/ net zero plan requirements to suppliers.
Food and nutrition	<ul style="list-style-type: none"> •Assess the carbon impact of a minimum of three meals per annum and identify low carbon options. •Promote the eatwell guide and encourage an increase in plant-based eating for patients and staff.
Adaptation	<ul style="list-style-type: none"> •Partner at place-level to address climate change adaptation. •Complete a Climate Change Risk Assessment by 2025.
Green Space and biodiversity	<ul style="list-style-type: none"> •Achieve 10% biodiversity gain on Lynfield Mount Hospital during redevelopment. •Provide opportunities for service users to benefit from nature-based activities and therapy.

Appendix A: Carbon Reduction Roadmap

Carbon Reduction Roadmap

In addition to the below we will also aim for year on year reductions associated with digital transformation, medicines efficiency, out of area bed needs, stock control and sustainable food.

