

The Power of Multi-Disciplinary Team Working and Recovery Innovations in Forensic Psychiatry

Presented by Christopher Weston, Dennis Boote and
Dishna Parmar

Moorlands View Low Secure Hospital
Bradford District Care Foundation Trust

Outline of the presentation

Part 1 –

- Historical context – Effects of MDT siloed working, lengths of stay and how we unblocked the system

Part 2 -

- Progress with MDT recovery focussed approaches

Part 1

What was Forensic MDT working like in 2014

What we did... ? continued

- **Review siloed working arrangements - cross ward working for therapy & transition workers**
- **Systematic review of 'long term rehab' cases is it actually Rehabilitation or Quality of Life needs?**
- **Myth busting – challenging fixed views**
- **Identify follow on placement**

What we did...?

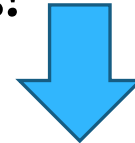
Ask the question... Does this person need to be in secure services?



**If so .. Fine
status quo remains**



**If not why are they still in
secure services?**



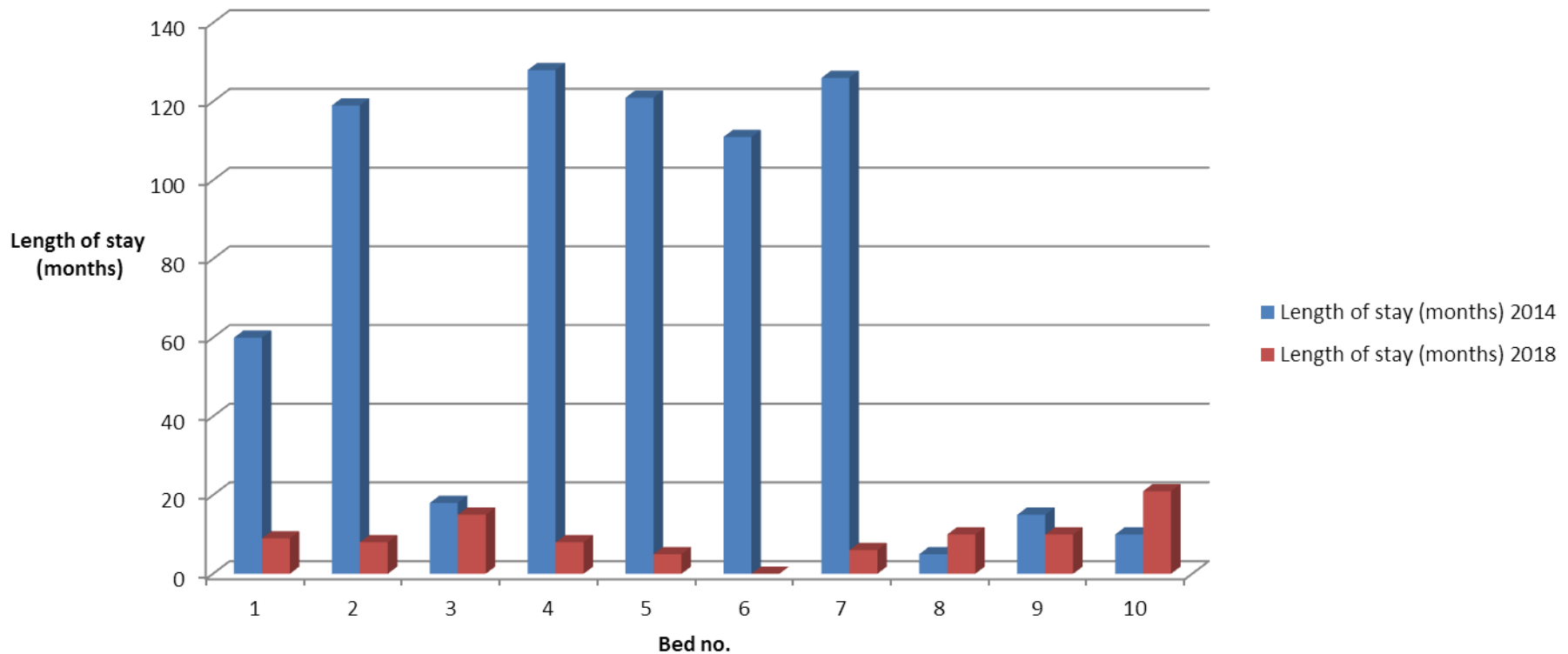
**What needs to be done to help them
towards discharge and what are the follow on care needs?**



What is their estimated discharge date?

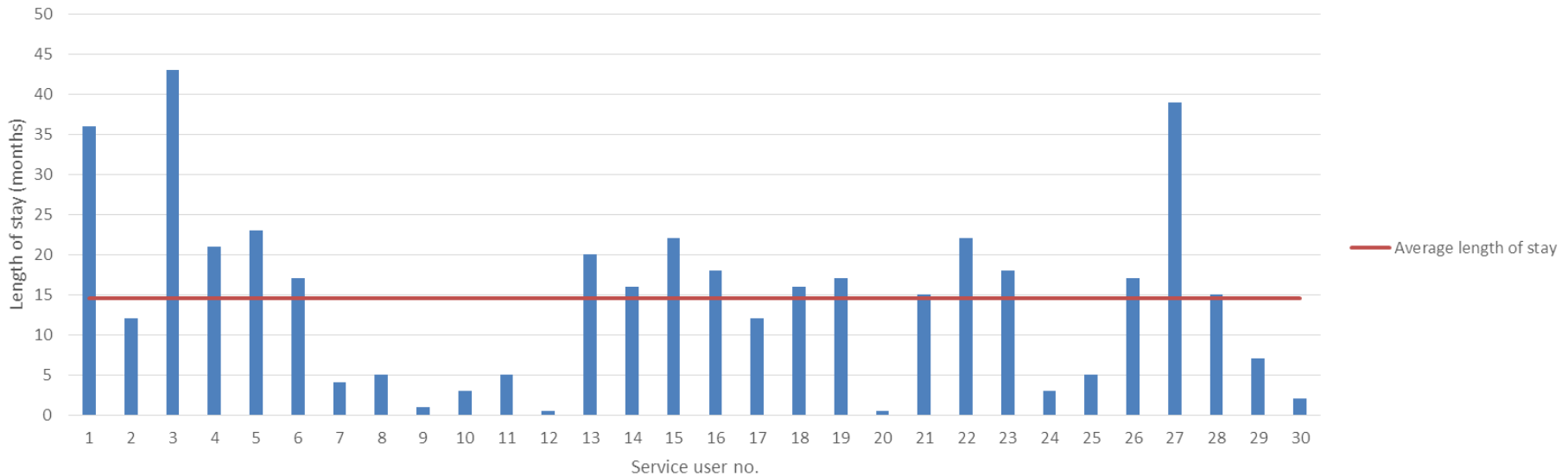
Baildon April 2014 & 2018

A graph to compare the lengths of stay of service users on Baildon Ward (in bed) 2014 and 2018



Throughput of service users at Moorlands View (April 17 – April 18)

Length of stay of service users discharged between April 2017 and April 2018



Length of Stay national picture

| | | |
|--|---|---|
| Average length of stay for those in a low secure bed | NHS Average 31/03/2016 (NHS Benchmarking Network 2017) 957 days | Moorlands View Average December 2017 366 days |
| Average length of stay based on discharges | NHS Average (based on discharges in 2015/16) (NHS Benchmarking Network 2017) 699 days | Moorlands View Average (based on discharges in 2017/18) 441 days |

Part 2

Smoothing the Forensic pathway

- Preadmission Assessments
- Timelines
- Collaborative discharge planning

Preadmission Process

Timelines

The image features a solid blue header at the top. The word "Timelines" is centered in white, sans-serif font. Below the header, the background is white with several overlapping, semi-transparent blue wavy lines that create a sense of depth and movement.

Collaborative Discharge Planning

- Collaborative discharge planning
- Working with housing providers

Summary

- Recognising & understanding blockages in the system can lead to new ways of working
- Asking the right questions to the right people are key to developing appropriate plans of care
- Clear understandings about the purpose of admissions helps to manage expectations and may reduce length of stay.
- We think it's all about good relationships and MDT working